



BioChek

SMART VETERINARY DIAGNOSTICS



VetAssure™ Surface ATP Test

With increased focus on biosecurity, due to disease transmission risks and severe outbreaks, poultry producers need a tool to help verify and track the successful implementation of hygiene and sanitation protocols as part of their biosecurity plan.

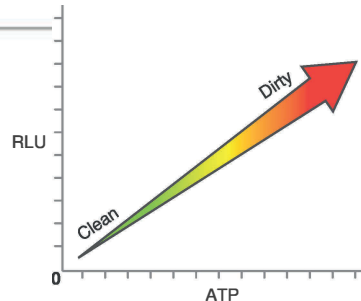
The VetAssure™ biosecurity verification solution helps veterinarians and farmers to verify cleanliness and biosecurity procedures applied throughout the entire poultry production chain (farms, hatcheries, trucks, feedmills ...).

The purpose is to assess cleanliness of surfaces to monitor cleaning procedures based upon the Farms HACCP principles and Risk Assessments.

The VetAssure™ Surface ATP test uses bioluminescence technology to identify and measure Adenosine Triphosphate, commonly known as ATP. This measurement objectively determines from a microbiological level if a surface has been cleaned thoroughly or if it requires a corrective action such as a recleaning. This all-in-one test contains a pre-wetted swab bud for optimal sample recovery. A unique, liquid-stable reagent provides superior reproducibility and robustness of the ATP measurements.

What is ATP?

Adenosine Triphosphate (ATP) is an energy molecule found in all living cells that allows cellular metabolism to take place. All organic matter contains ATP. Therefore, the detection of ATP on a surface after cleaning is an indication of cleaning efficacy.





BioChek

SMART VETERINARY DIAGNOSTICS

What is Bioluminescence?

BioChek's VetAssure™ ATP tests contains an enzyme called luciferase which produces a bioluminescence (light-producing) reaction when it comes into contact with ATP. The light emitted from the reaction is measured and quantified in the **Hygiena® Ensure Touch™ Luminometer**.

The unit of measurement for the emitted light is Relative Light Units (RLU).

The quantity of light generated by the bioluminescence reaction is directly proportional to the amount of ATP present in the sample.

Higher Contamination = Higher RLU.

The reaction is immediate, allowing results to be read in ten seconds.

Results are expressed numerically on the **Ensure Touch™ Luminometer** screen in RLU.



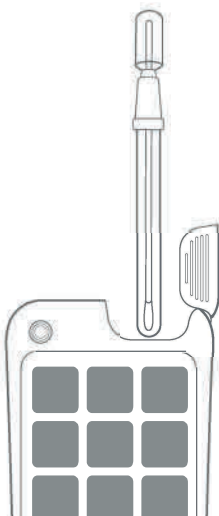
Studies have shown that the ATP bioluminescence method is useful and efficient to evaluate the cleanliness of a variety of surfaces in farm environments.

Potential uses include:

- Determine the cleanliness of surfaces like walls, floors, vents, fan shafts, heaters, drinkers, feeders, nest boxes., egg belts
- Highly accurate and cost-efficient alternative to microbiological methods for rapid on-farm/on site assessments.
- Useful to identify critical areas for subsequent further cleaning and disinfection.
- ATP bioluminescence assays are also a simple and reliable method to test showering/handwashing compliance.
- Could be used to drive improvement in internal and external KPIs

Benefits of the product:

- 1** Pre-wetted swab maximizes sample recovery and breaks through biofilm.
- 2** Unique liquid-stable reagent gives superior sensitivity and reliable results.
- 3** 15-month self-life at refrigerated temperature (2-8°C)
- 4** 4-week shelf life at room temperature (21-25°C)
- 5** 100% recyclable materials





How are test results tracked?

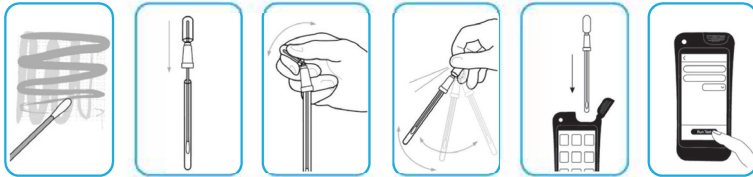
Test results can be tracked on the luminometer and software by:  Location  Plan  User

This information allows users to clearly associate results with the specific location, or group of locations tested and who performed the tests. This allows users to track biosecurity performance over time and look for continual improvement.

Performance

The VetAssure™ biosecurity solution has superior repeatability, and outstanding performance for linearity, sensitivity, and accuracy over other ATP systems.

Testing procedure



Benefits for the primary production companies to use the BioChek VetAssure™ ATP solution

- Reduction in risk of spreading disease laden biological material resulting in catastrophic production losses. Risk reduction and money saved through proactive disease prevention.
- Baseline establishment of hygienic cleanliness for metrics of continued and objectively measured improvement. A valued and effective data communication tool.
- Consistent metrics for objectively measuring key employee and specific location/transport compliance with critical hygiene standards.
- Essential tool for incorporation to organizational hygiene SOPs and Quality Assurance Programs in providing quantitative data to established protocols.
- Data documentation for external representation to governmental authorities and key stakeholders indicating the seriousness in which the organization manages hygiene and disease prevention.
- Potential for positive public relations and communication in a proactive manner to targeted recipients as desired.



VetAssure™ Surface ATP testing vs other verification methods

VetAssure™ Surface ATP testing is very easy to use and provides an objective view on the success of hygiene procedures. The VetAssure™ Surface ATP tests come with an online software for the analysis of results.

	ATP Testing	Micro-biological Testing	Visual Inspection
Ease of Use	✓✓✓	+(+)	++++
Objectivity	✓✓✓✓	++++	+
Quantitative	✓✓✓✓	++++	
Qualitative (Pass/Fail)	✓✓✓✓	++++	++++
Timeliness	✓✓✓✓		++++
Confirmation of Cleaning	✓✓✓✓	+	++
Software Analysis	✓✓✓✓		



For more information, please contact:
info@biochek.com
 or visit www.biochek.com



BioChek VetAssure Poultry