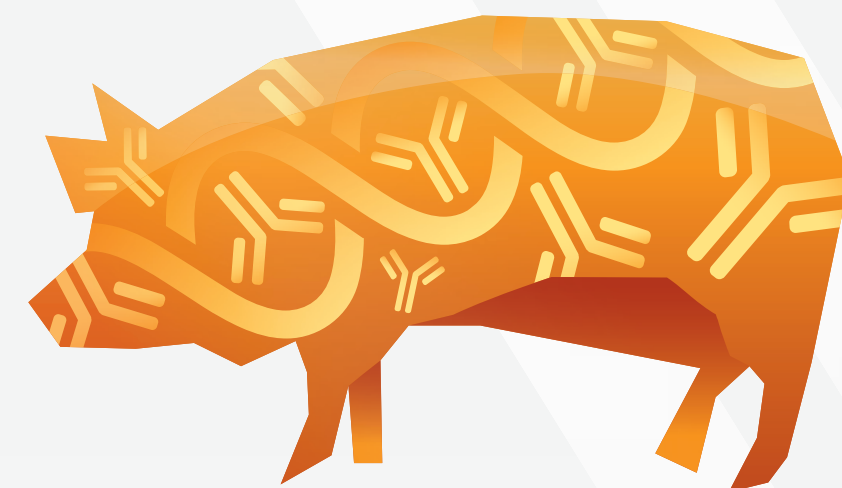


# BioChek software, a 24/7 access link between sample submission and laboratory results

Maartje Wilhelm DVM, Eric van Esch DVM,  
 Alex Eggen DVM - BioChek BV Reeuwijk, Netherlands  
 Tim Goode, BioChek USA, [timgoode@biochek.com](mailto:timgoode@biochek.com)



## Introduction

For monitoring the health status of a swine herd data has to be collected. An essential tool for monitoring is software allowing for cross sectional reports and trend analysis. Data collection starts with submitting samples to a diagnostic laboratory. This process involves administrative procedures that are time consuming and can easily lead to mistakes. BioChek software makes this process much easier by generating barcoded sample submission forms. The laboratory and the field user can share the same database. After processing and validation of the test results, the data are stored in the cloud with 24/7 access on any device. Historical data can be re-used to generate several types reports.

## PCV2 Field Example

Serum samples were taken from the sows before farrowing and from piglets before vaccination at 3 weeks of age and after vaccination at 5 and 8 weeks of age. Results of the serological analysis with the BioChek PCV2 ELISA are presented in figure 1.

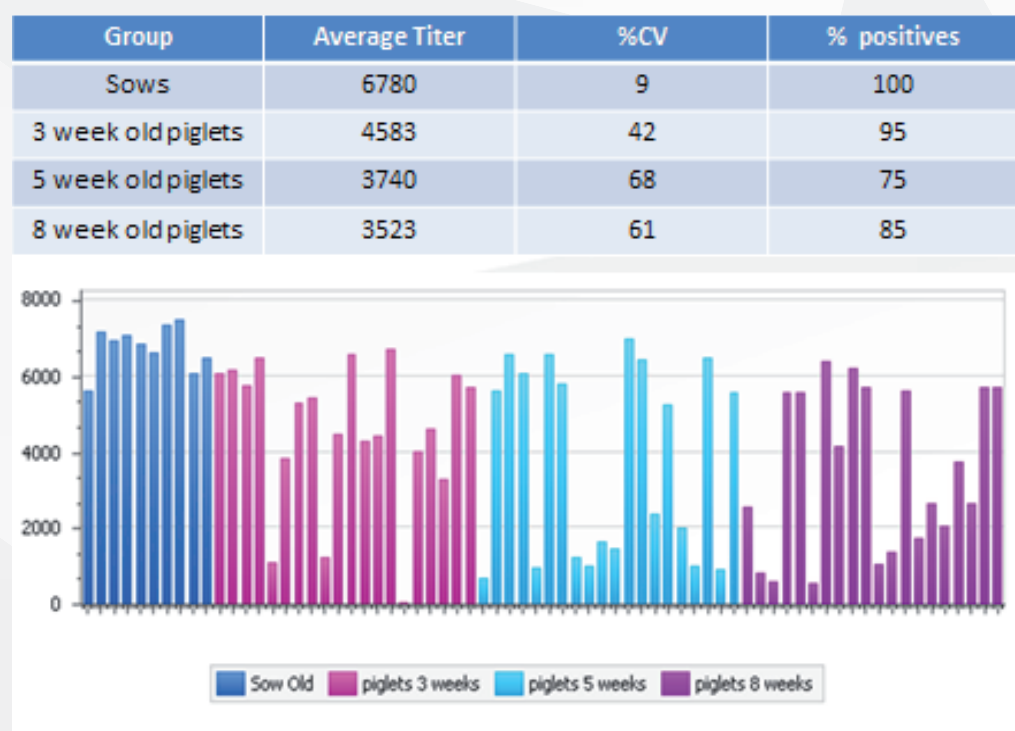


Figure 1. PCV2 antibody titers in the sows before farrowing, piglets before vaccination at 3 weeks of age and after vaccination at 5 and 8 weeks of age.

The report is showing the titer level, the mean titer, the calculated %CV (measure of uniformity) and the number of positives.

## Presentation of results

The BioChek Farm histogram report was used. It shows that sow vaccination provided uniform titers. The report also shows a high %CV in the 3 week old piglets. The mean titer declines from 3 to 8 weeks of age despite vaccination and the %CV remains high.

## Conclusion

As shown in the graph, the BioChek software provides the veterinarian with an easy visual cross sectional report. This report is only one mouse click away. Other reports, such as trend reports, will be of help for the veterinarians to evaluate health status on farms easily at anytime and anywhere.

BioChek software is available on request. For further information on the BioChek software please watch the clip on: [www.biochek.com/animation](http://www.biochek.com/animation)

